

Water T&D Construction Standard

**SERVICE CONNECTION WITH SERVICE SADDLE, 1" - 2", ON
POLYETHYLENE ENCASED WATER MAIN**

APPLICATION: 1" through 2" service connections on polywrapped ductile cast iron water mains.

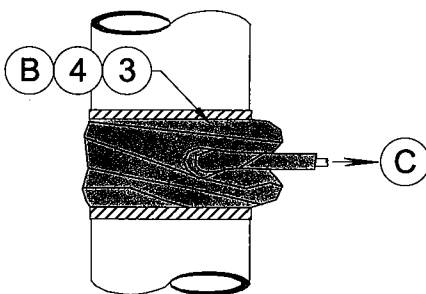
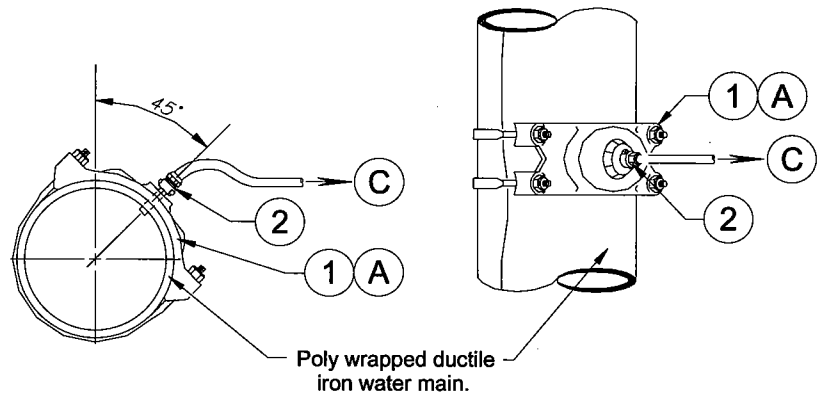
INSTALLATION NOTES

- Typical service stub is 1" Dia. copper. Other sizes may be specified when required

(A) Tapping polyethylene-encased iron pipe using a service saddle requires that an "X" shaped cut be made in the polyethylene wrap at the spot where the gasket of the service saddle will be placed. Fold the cut polywrap back so that it does not interfere with the matting surface of the gasket to the pipe. The service saddle is then placed over the polywrapped water main so that the entire gasket makes direct contact with the pipe wall. Be certain that the pipe wall and gasket matting surfaces are clean. The saddle can then be tightened in place. After the tap is completed, the entire circumferential area shall be inspected for damage.

(B) Any damaged areas must be covered with polywrap along with the service saddle. The entire service saddle and at least two feet of the service line must be wrapped in polywrap and taped in place. Repair damage to the polyethylene encasement as rips and tears will result in accelerated corrosion of the watermain.

(C) Refer to LBWL Standard W-03-0015 & W-03-0020 for service stub installations.



MATERIALS			
REF	ITEM NO.	QTY*	DESCRIPTION
①	30-02494	(1) As Req'd	Saddle, 2" x 1" Single strap
	30-22326		Saddle, 3" x 1" Dbl strap
	30-22467		Saddle, 3" x 1-1/2" Dbl strap
	30-22508		Saddle, 4" x 1" Dbl strap
	30-22623		Saddle, 4" x 1-1/2" Dbl strap
	30-22780		Saddle, 6" x 1-1/2" Dbl strap
	30-22889		Saddle, 8" x 1-1/2" Dbl strap
	30-22892		Saddle, 10" x 1-1/2" Dbl strap
	30-22904		Saddle, 12" x 1-1/2" Dbl strap
	30-22920		Saddle, 16" x 1-1/2" Dbl strap
②	30-03446	(1) As Req'd	Corp stop 1" CC x 1" CTS comp
	30-04245		Corp stop 1-1/2" CC comp x 1-1/2" CTS comp
	30-04401		Corp stop 1-1/2" CC x 2" MIP
③	non-stock	1 Roll	Tape, Polyethylene
④	37-00_ _ _	As Req'd	Pipe encasement, "any size"

* Required for making one service tap

Director of Engineering DK Wood, P.E. Date: 3/14/05
 Manager, Water T&D Resource Center B. McLeod Date: 3/15/05