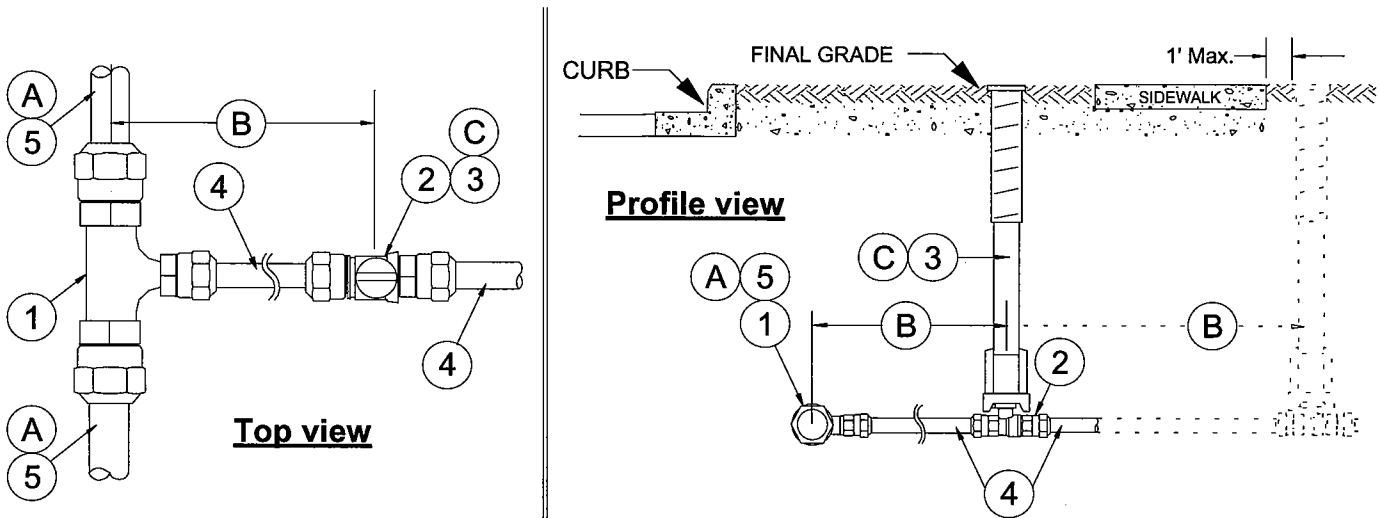


LANSING BOARD OF
WATER & LIGHT

Water T&D Construction Standard

SERVICE CONNECTION - 1" TAP OFF 2" COPPER WATER MAIN

APPLICATION: Standard 1" service taps off of 2" copper tube mains.
Typical applications are for Cul-De-Sac's.



INSTALLATION NOTES:

- Refer to BWL Standard W-03-0015 for requirements for a Standard 1" service stub.
- Refer to BWL Standard W-03-0025 for requirements for a Standard 1" curb box to building installation.
- Ⓐ The 2" copper water main is typically installed to serve cul-de-sac's and the material is identified in this Standard as a reference.
- Ⓑ Separation between the 2" copper main and the 1" curb stop shall be no less than 18". Curb stop / Curb box should always be located between the curb and the sidewalk. If no sidewalk exists, the curb stop shall be located within the Right-Of-Way with the preferred location being 3' behind the curb. In the event that there is not enough physical space to locate the curb stop between the curb and the sidewalk, the curb stop & associated curb box shall be installed no more than 1' past the sidewalk.
- Ⓒ After Curb box is installed, raise Curb box to final grade.

MATERIALS			
REF	ITEM NO.	QTY*	DESCRIPTION
①	30-33212	1	Tee, Assembly, 2" x 2" x 1" CTS Comp.
②	30-06166	1	Curb Stop, 1" CTS Comp. both ends
③	30-00320	1	Curb Box Complete
④	30-45345	As req.	Tube, Copper, Type K, 1" x 60ft roll
⑤	30-45402	Reference	Tube, Copper, Type K, 2" x 20ft length

* Required for making one service tap

Director of Engineering *DK Wood*

Date: *5/9/05*

Manager, Water T&D Resource Center *B. McLeod*

Date: *5/23/05*